

CONFIDENTIAL

### Attachment 1

**25 Elam Street, Parnell - approximately 117sqm as shown in red GeoMaps aerial image**



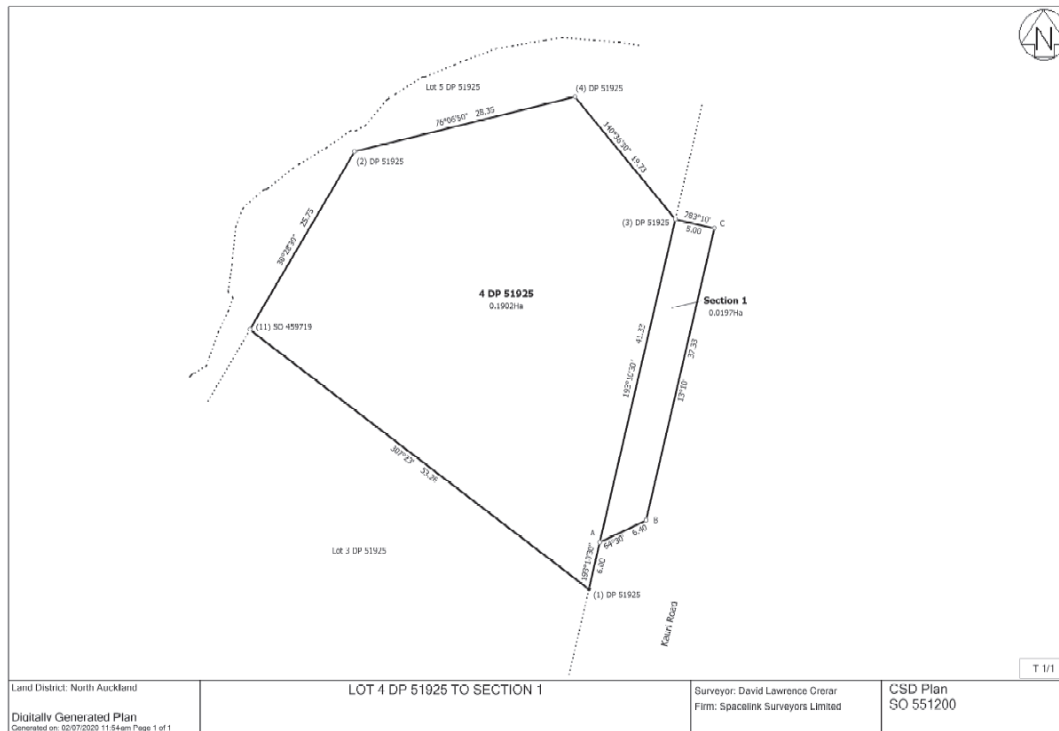
**584 Kaipara Hills Road – approximately 1.71 ha as shown in red on GeoMaps aerial image and Spatial Map**



CONFIDENTIAL

## Attachment 2

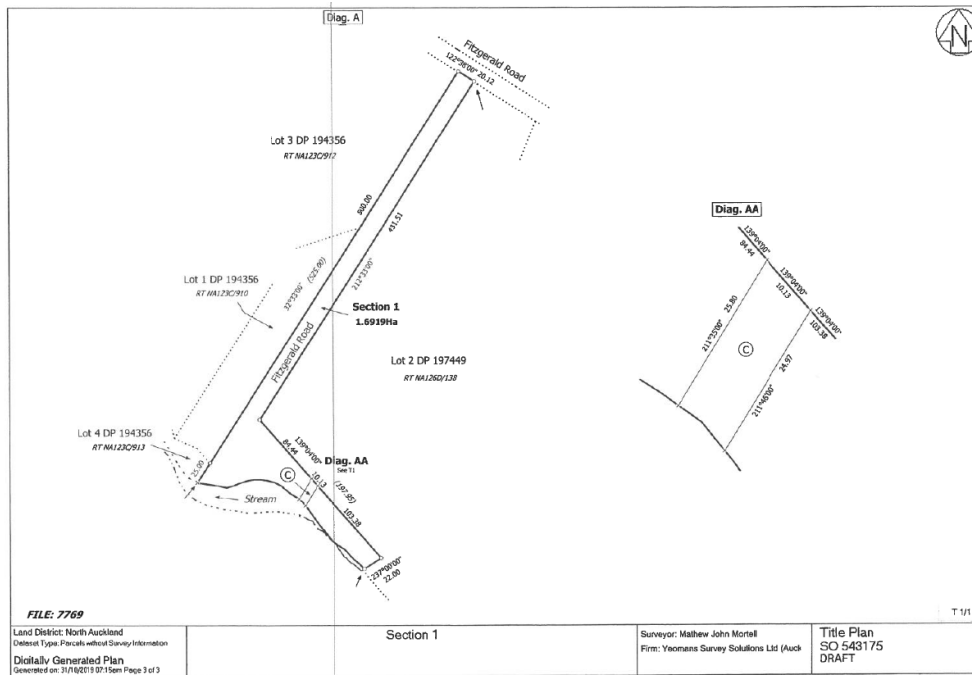
### 194 Kauri Road, Whenuapai – 197 sqm shown as Section 1 on Survey Office Plan 551200 and GeoMaps aerial image



CONFIDENTIAL

### Attachment 3

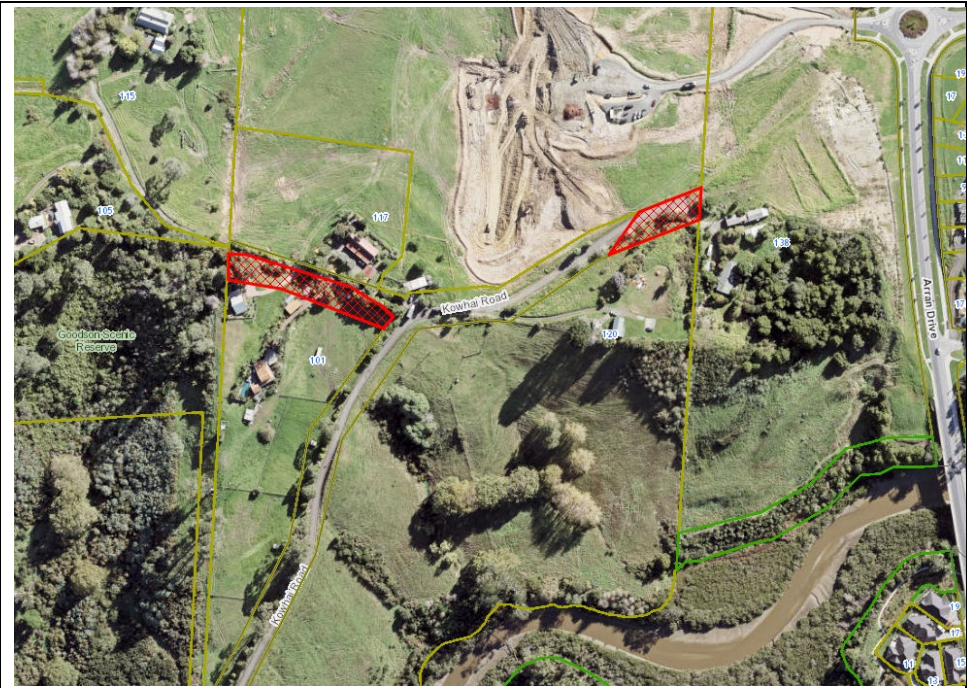
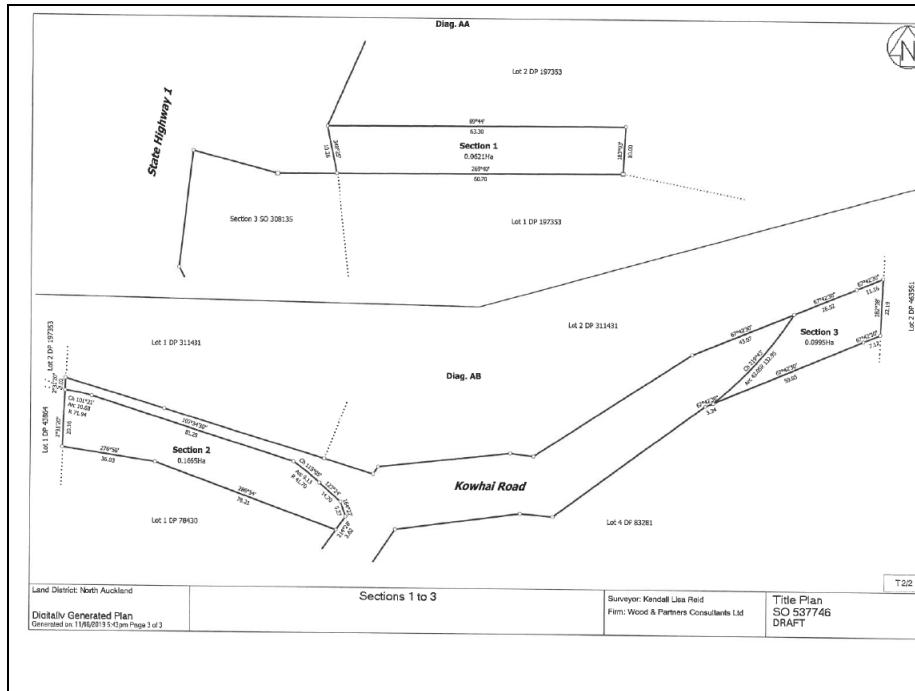
## Fitzgerald Road - approximately 1.6919 ha shown as Section 1 on Survey Office Plan 543175 and GeoMaps aerial image



CONFIDENTIAL

### Attachment 4

**Kowhai Road - two locations being an area of approximately 0.1665 ha and 0.0995 ha shown as Section 2 and 3 SO 537746 and the GeoMaps aerial image**





CONFIDENTIAL

### Attachment 6

### Clayden Road - approximately 5892 sqm as shown on GeoMaps aerial image and Section 1 on the Maven Associates Proposed Road Stopping Plan

