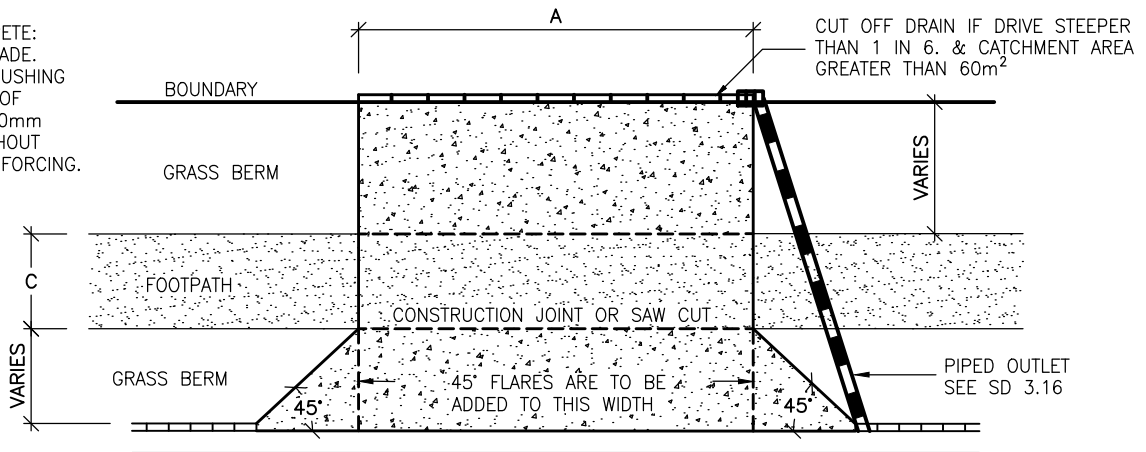


OBLIQUE VIEW

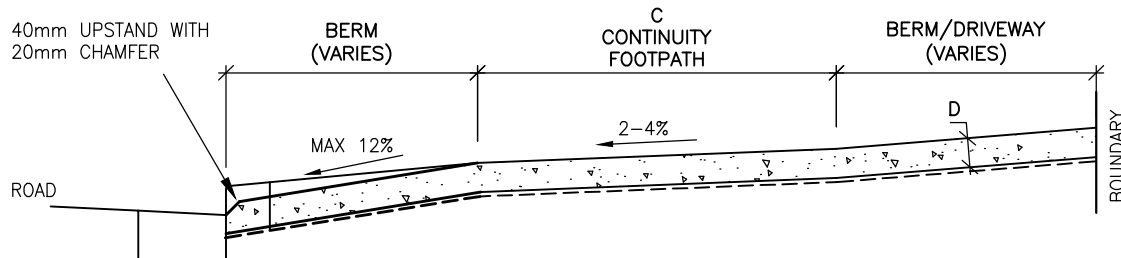
N.T.S.

ALL CONCRETE:
FACTORY MADE.
28 DAY CRUSHING
STRENGTH OF
20MPa. 150mm
THICK. WITHOUT
STEEL REINFORCING.



PLAN

N.T.S.



SECTION

N.T.S.

NOTES:
REFER SD 3.10.02 for dimensions

ENGINEERING
STANDARDS MANUAL

ISSUE
SEPTEMBER 2010

**RESIDENTIAL VEHICLE
CROSSING
(EXISTING KERBED ROADS)**

STANDARD DETAIL

SD3.10